

SAFETY AND CONTROL FOR RESEARCH & DEVELOPMENT

The LabGard® NU-545E biological safety cabinet offers **MAXIMUM CONTROL** for the most demanding laboratories requiring containment and monitoring.

The **TouchLink** control system provides the user with a simple and clear readout of the downflow and inflow based on the data input from two airflow sensors on the cabinet*.

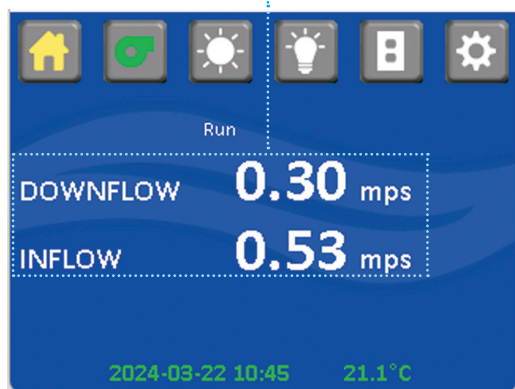
The **TouchLink** also allows users to view historical performance or schedule automatic operation while permitting technicians to perform diagnostic and configuration functions.

AIR FLOW SENSOR

Measures exhaust velocity to allow the TouchLink to calculate inflow velocity.

AIR FLOW SENSOR

Measures downflow velocity to enable the TouchLink to monitor and control this airflow.



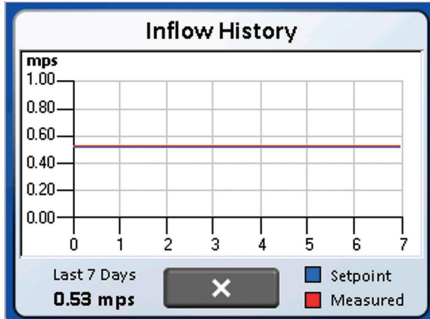
* Downflow sensor enables monitoring and control while the exhaust sensor enables monitoring only.



Scan for more information



TOTAL TRACEABILITY FOR PERFORMANCE & SERVICE



	Enable	On	Off
Sunday	<input type="checkbox"/>	00:00	00:00
Monday	<input checked="" type="checkbox"/>	08:00	17:00
Tuesday	<input checked="" type="checkbox"/>	08:00	17:00
Wednesday	<input checked="" type="checkbox"/>	08:00	17:00
Thursday	<input checked="" type="checkbox"/>	08:00	17:00
Friday	<input checked="" type="checkbox"/>	08:00	12:00
Saturday	<input type="checkbox"/>	00:00	00:00

UV Light Run Time	10
Blower Motor Run Time	252

Filter Life Available
100%

Starting RPM	Maximum RPM	Current RPM
700	1325	701 rpm

Last Certification Date
01/01/2024

Certification Time Period
6 Months

TouchLink not only displays current and historical performance but also allows for operation on a schedule, tracking UV and blower run times, estimating HEPA filter life based on changes in motor RPM, setting certification reminders, and other configuration or diagnostic options.

The LabGard® NU-545E is available with **MANY CONFIGURATIONS**

Motorized Window (Optional)

Allows easy adjustment by any user.

Glass Sides (Optional)

For greater interior visibility.



Stainless Steel Exterior (Custom)

Replaces standard powder coated carbon steel for easier cleaning.

Particle Counter Holder (Custom)

